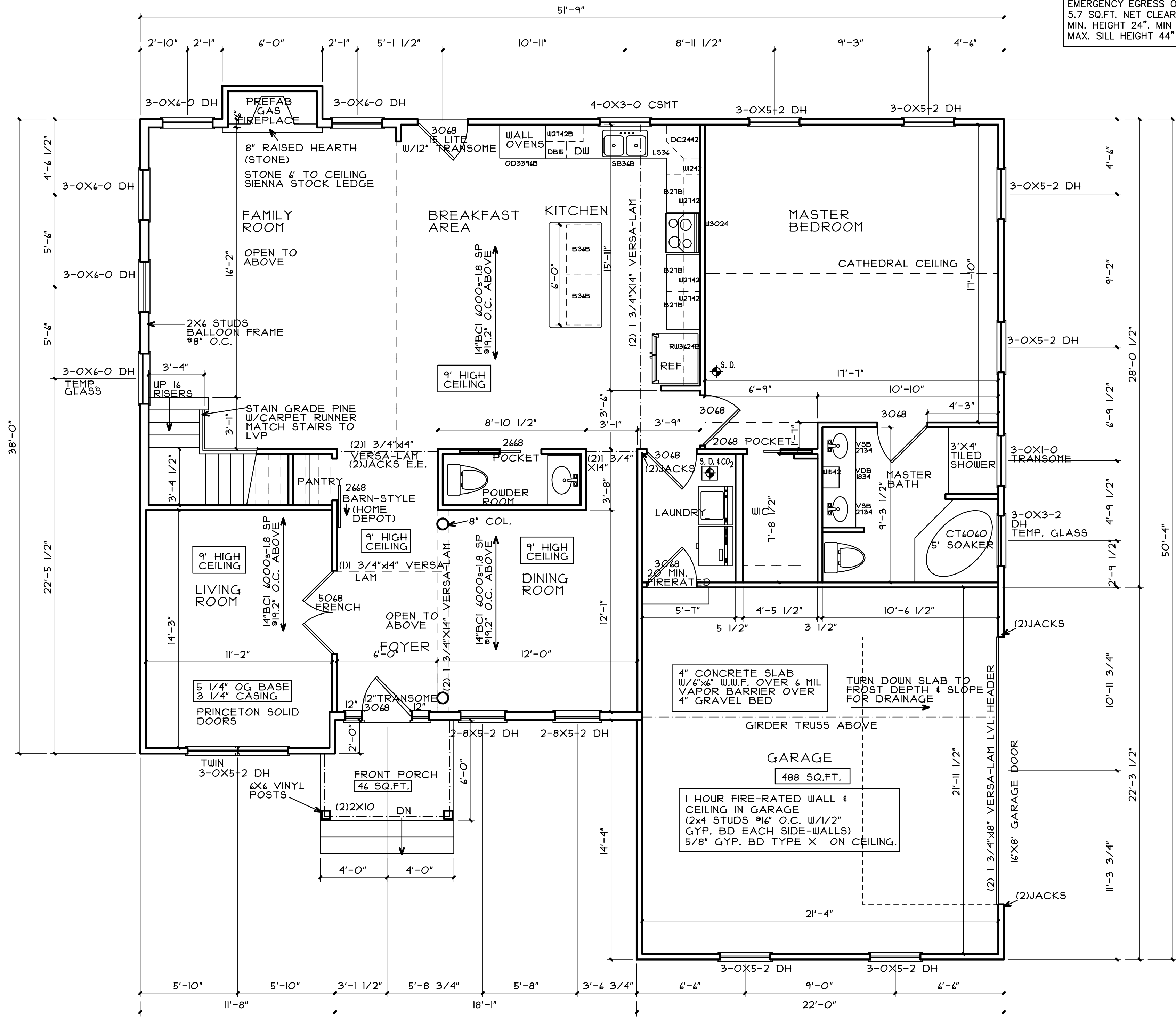


ALL HEADERS ARE
(2) 2X10'S U.N.O.
W/1 JACK EACH END

NOTE: ALL BEDROOMS MUST HAVE AN
EMERGENCY EGRESS OPENING OF MIN.
5.7 SQ.FT. NET CLEAR OPENING.
MIN. HEIGHT 24". MIN WIDTH 20".
MAX. SILL HEIGHT 44" OFF FLOOR.

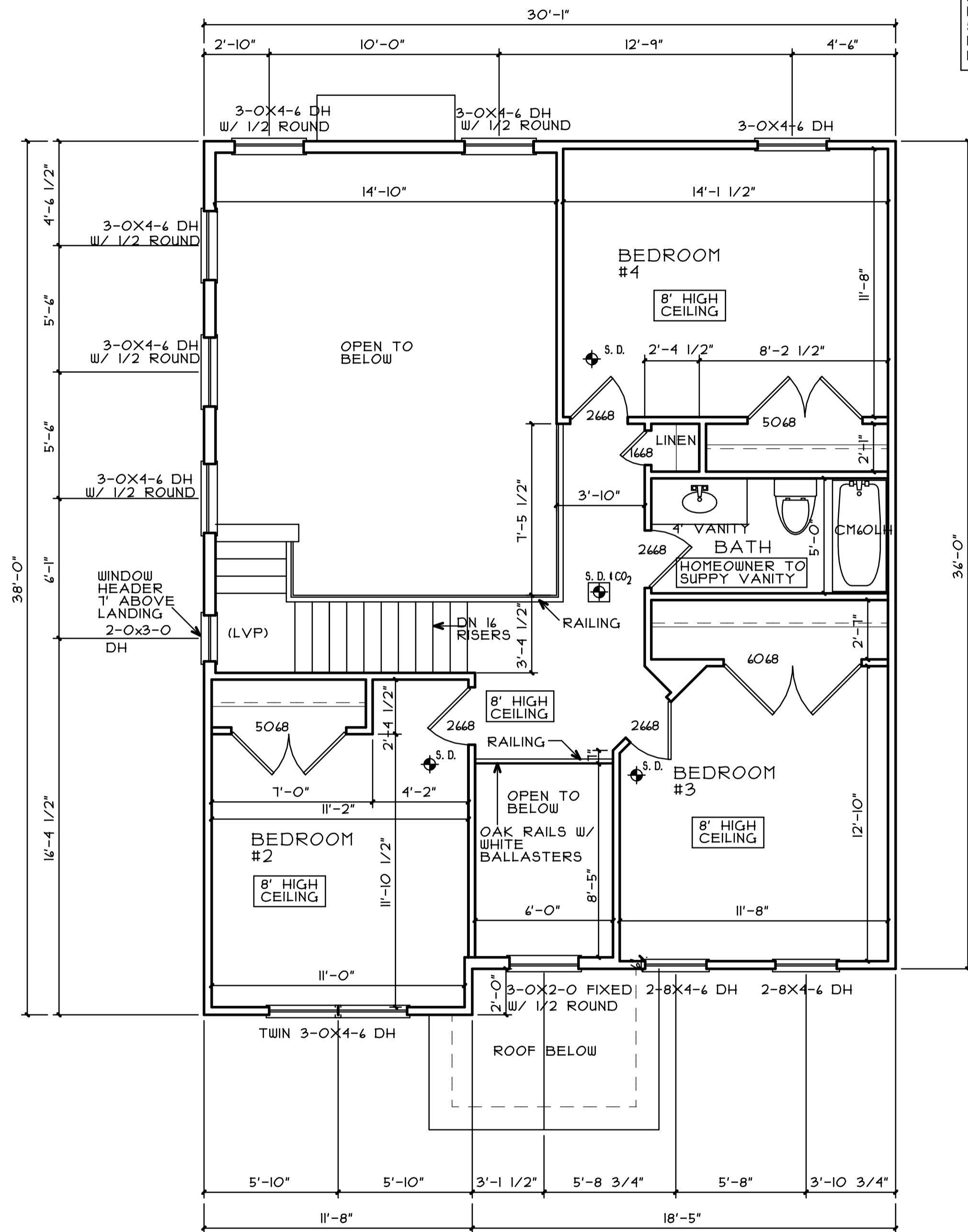


FIRST FLOOR PLAN 1,714 SQ.FT.

SCALE 1/4"=1'-0"

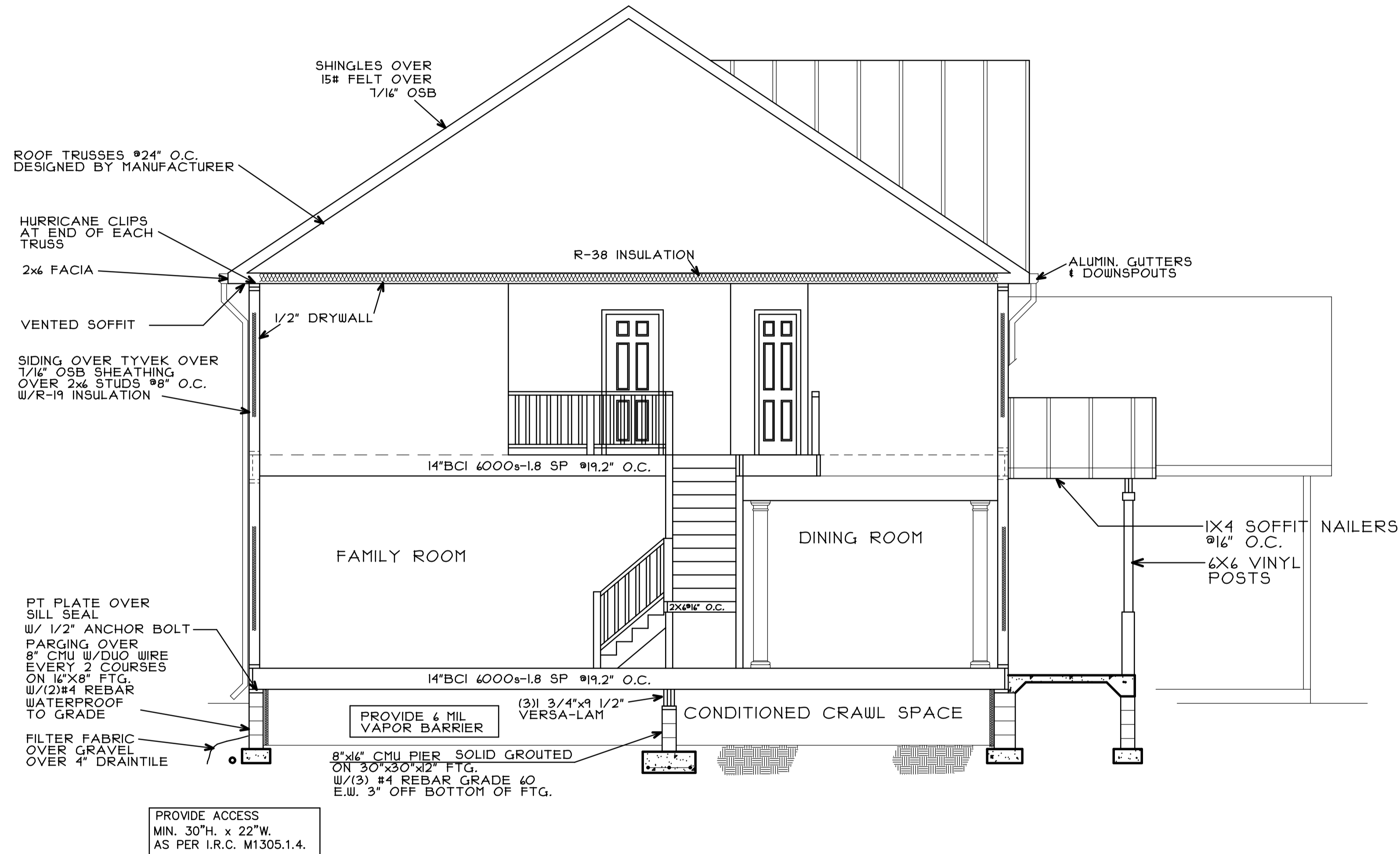
ALL HEADERS ARE
(2) 2X10'S U.N.O.
W/1 JACK EACH END

NOTE: ALL BEDROOMS MUST HAVE AN
EMERGENCY EGRESS OPENING OF MIN.
5.7 SQ.FT. NET CLEAR OPENING.
MIN. HEIGHT 24". MIN WIDTH 20".
MAX. SILL HEIGHT 44" OFF FLOOR.



SECOND FLOOR PLAN 762 SQ.FT.

SCALE 1/4"=1'-0"



SECTION VIEW

SCALE 1/4"=1'-0"

NOTE: THE SILL PLATE OR FLOOR SYSTEM SHALL BE ANCHORED TO THE FOUNDATION W/ 1/2" DIA. BOLTS @6" O.C. & NOT MORE THAN 12" FROM CORNERS. BOLTS SHALL EXTEND A MIN. 7" INTO CONCRETE OR 15" INTO MASONRY