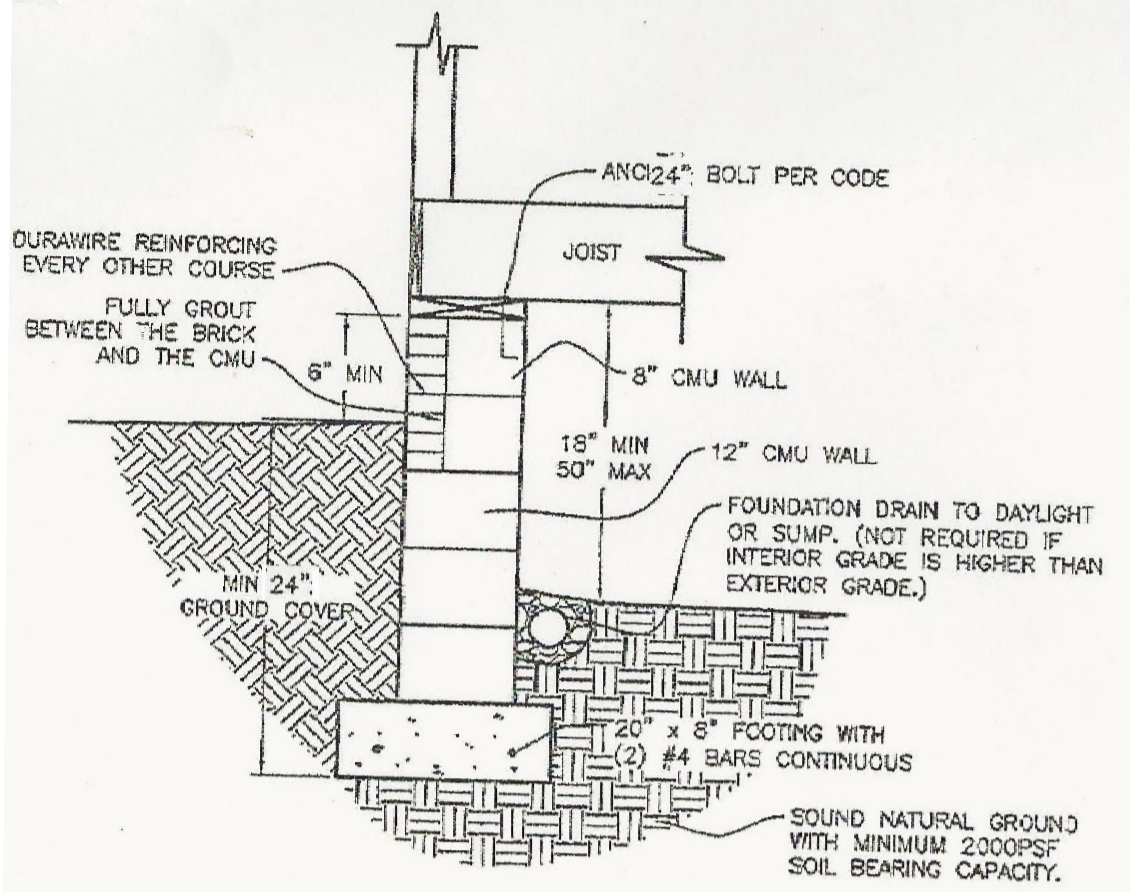


ALL HEADERS ARE
(2) 2X10'S U.N.O.
W/1 JACK EACH END

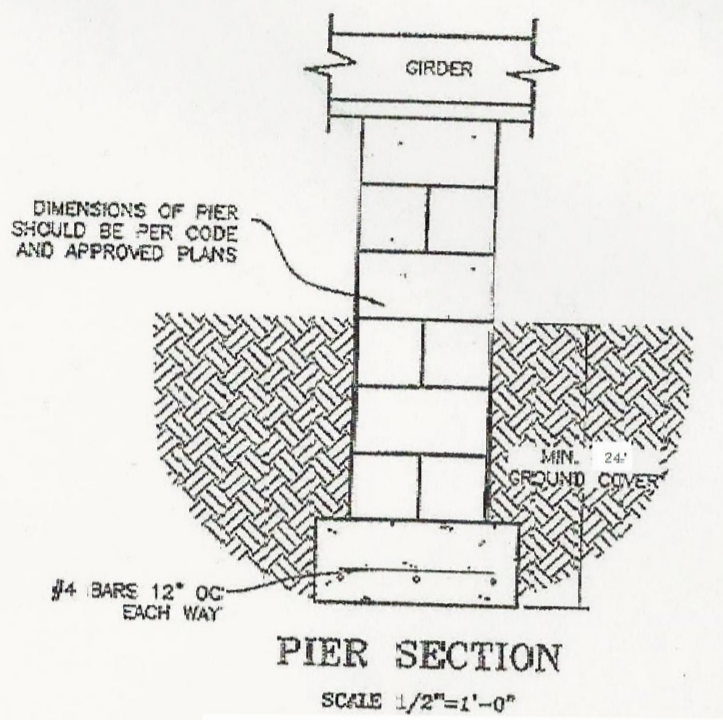
NOTE: ALL BEDROOMS MUST HAVE AN
EMERGENCY EGRESS OPENING OF MIN.
5.7 SQ.FT. NET CLEAR OPENING.
MIN. HEIGHT 24". MIN WIDTH 20".
MAX. SILL HEIGHT 44" OFF FLOOR.

FIRST FLOOR PLAN 2,296 SQ.FT.
SCALE 1/4"=1'-0"



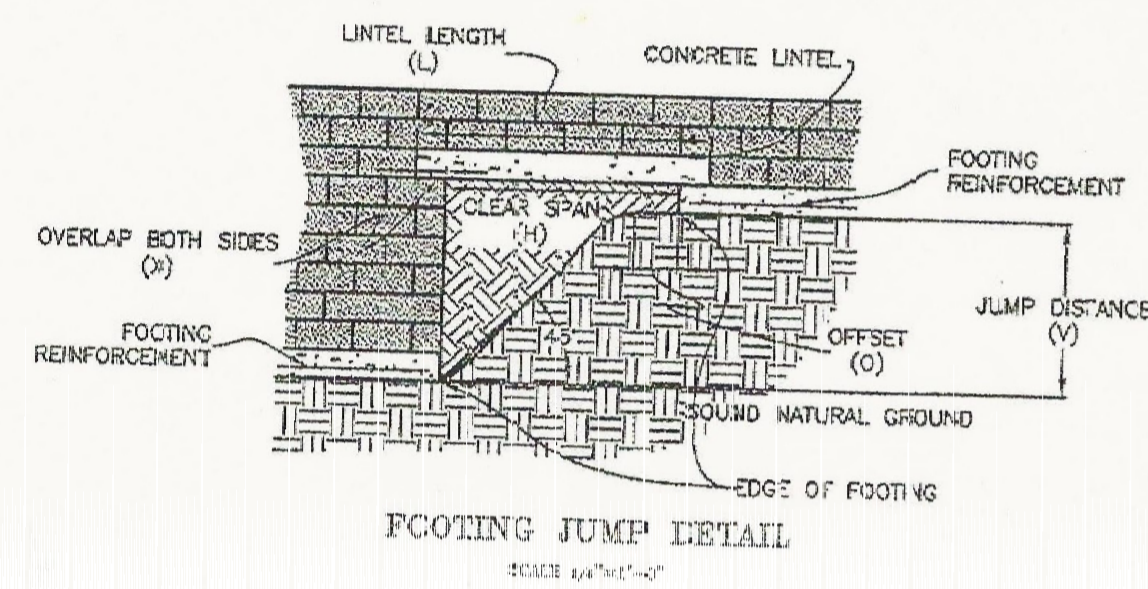
DESIGN NOTES:
 *INTERIOR PIER DIMENSIONS PER COUNTY APPROVED ARCHITECTURAL PLANS.
 -MINIMUM SIZE OF 24"x24"x8" BUT INCREASED DIMENSIONS MAY BE NECESSARY BASED UPON LOT/MODEL SPECIFIC LOADING

MATERIAL NOTES:
 *REINFORCING STEEL SHOULD BE GRADE 60
 -ALL #4 BARS SHOULD OVERLAP A MINIMUM OF 15" PER ACI CODE.
 -FOOTING STEEL SHOULD BE PROVIDED A MINIMUM OF 3" CONCRETE COVER AT ALL FACES
 -LINTEL STEEL SHOULD BE PROVIDED A MINIMUM OF 1.5" CONCRETE COVER AT ALL FACES
 *COMPRESSIVE STRENGTH OF CONCRETE:
 FOOTING = 3500 PSI



FOUNDATION SECTION
 SCALE 1/2"=1'-0"

PIER SECTION
 SCALE 1/2"=1'-0"

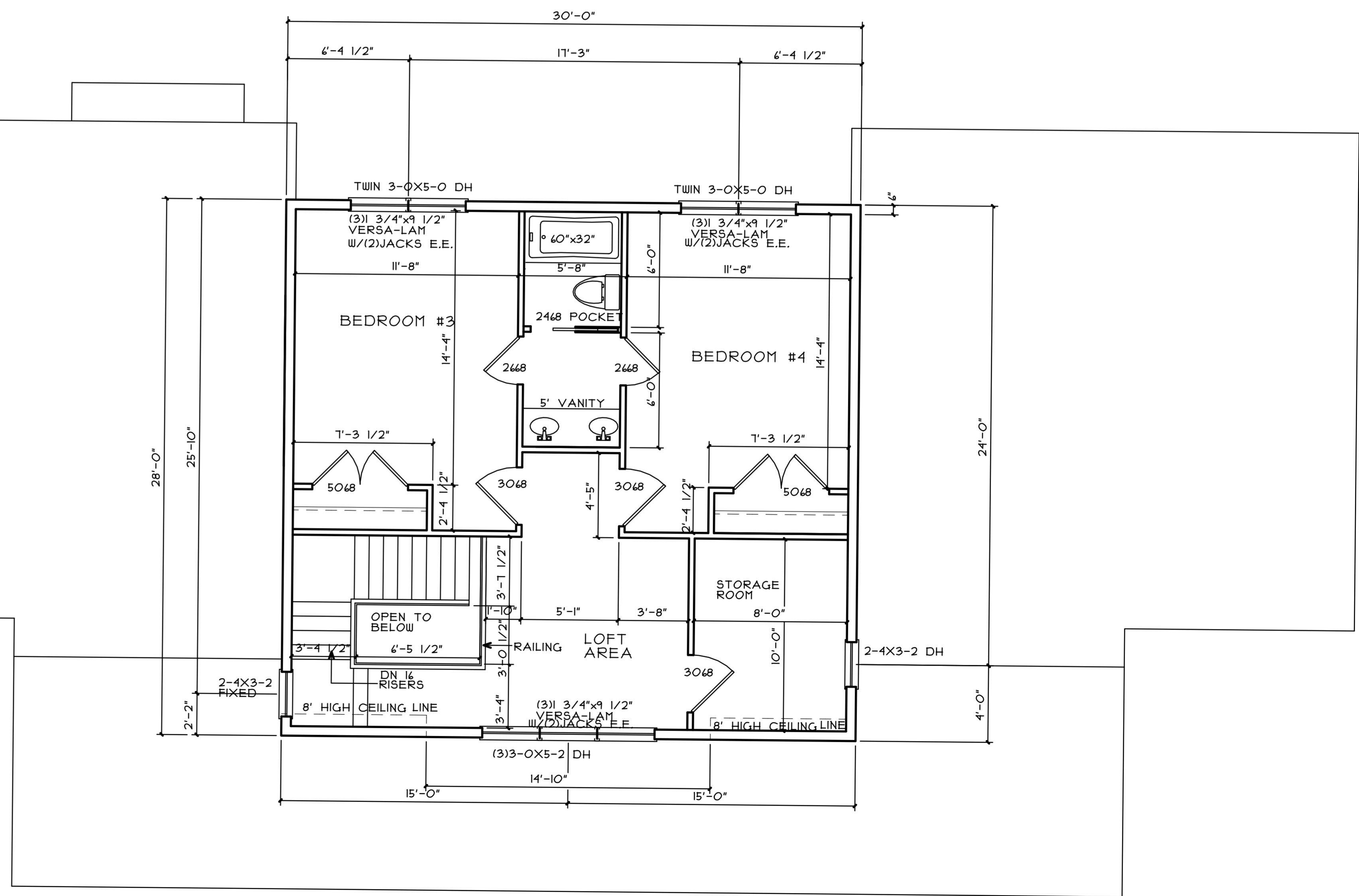
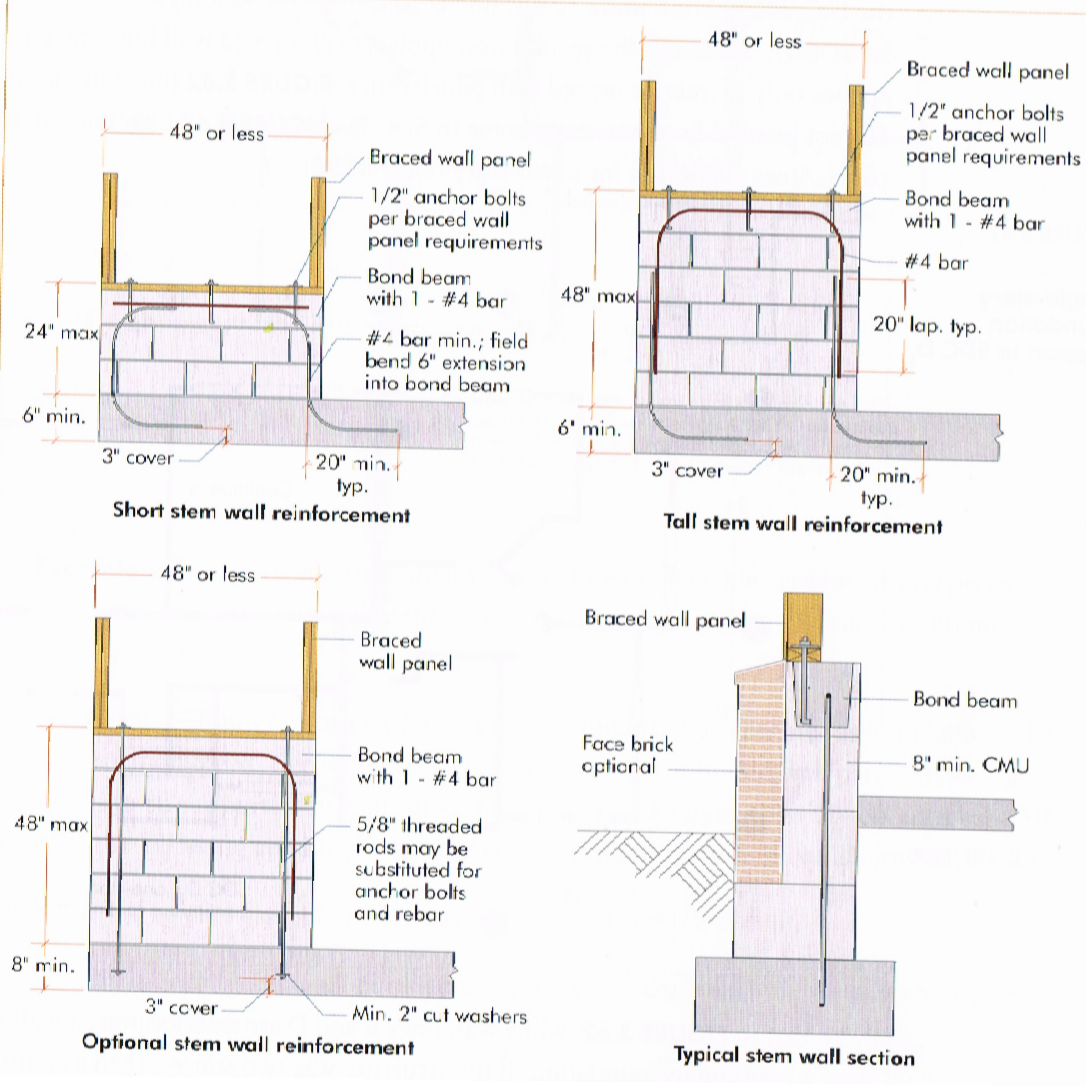


FOOTING JUMP DETAIL
 SCALE 1/2"=1'-0"

4. Concrete stem walls with a length of 48 inches (1219 mm) or less, greater than 12 inches (305 mm) tall and less than 6 inches (152 mm) thick shall have reinforcement sized and located in accordance with Figure R602.10.9.

New for 2012 is this provision that provides for the use of cast-in-place concrete stem walls for these narrow wall applications. The same reinforcement requirements are appropriate for such concrete stem walls, but the restriction against use with Methods ABW and PFH does not apply.

FIGURE 3.61
 Reinforcement of masonry or concrete stem walls supporting bracing elements
 IRC Figure R602.10.9



SECOND FLOOR PLAN 840 SQ.FT.
 SCALE 1/4"=1'-0"