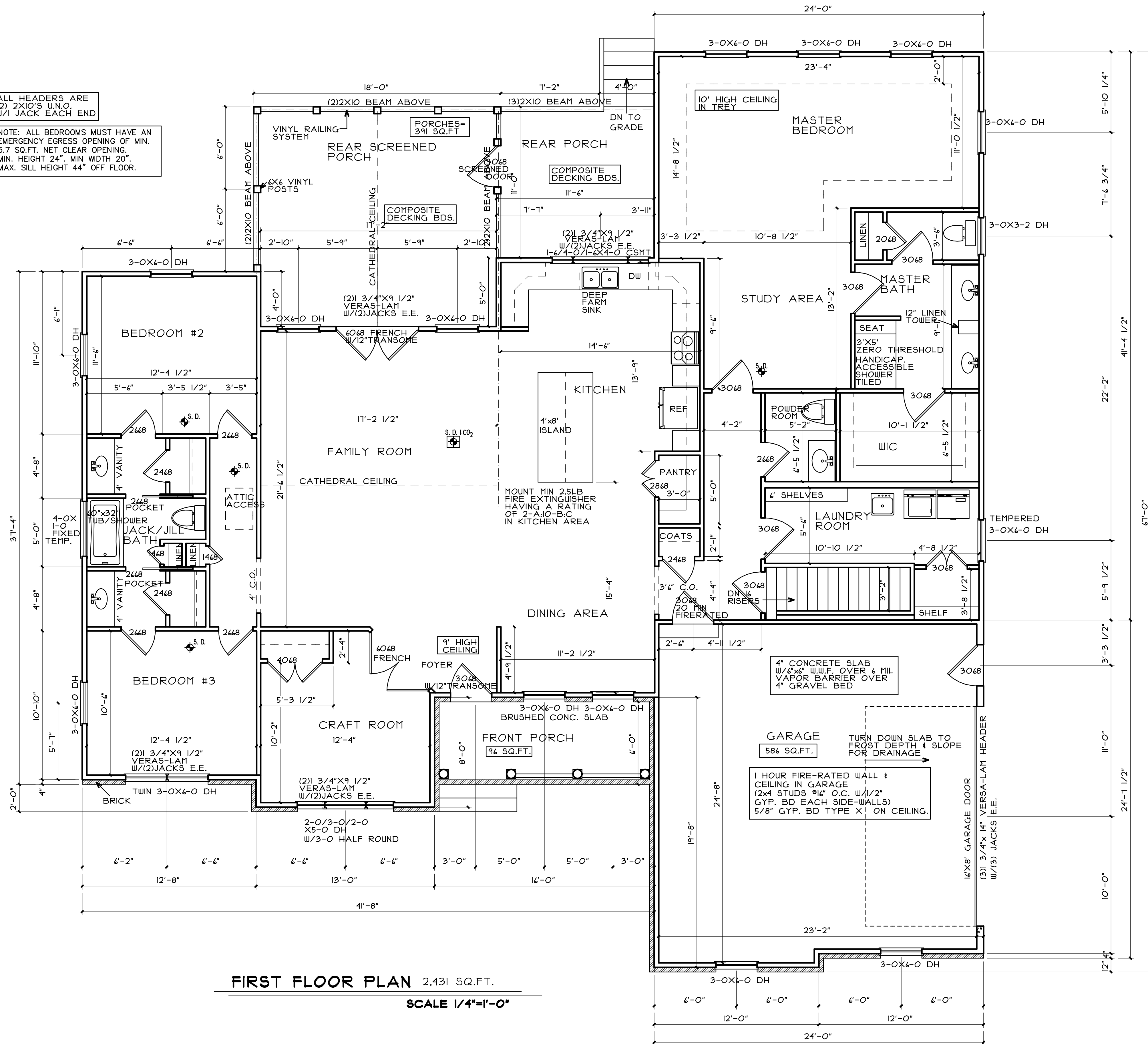


ALL HEADERS ARE  
(2) 2X10'S U.N.O.  
W/1 JACK EACH END

NOTE: ALL BEDROOMS MUST HAVE AN  
EMERGENCY EGRESS OPENING OF MIN.  
5.7 SQ.FT. NET CLEAR OPENING.  
MIN. HEIGHT 24", MIN WIDTH 20".  
MAX. SILL HEIGHT 44" OFF FLOOR.



FIRST FLOOR PLAN 2,431 SQ.FT.

SCALE 1/4"=1'-0"

NOTE: ALL BEDROOMS MUST HAVE AN EMERGENCY EGRESS OPENING OF MIN. 5.7 SQ.FT. NET CLEAR OPENING, MIN. HEIGHT 24", MIN WIDTH 20", MAX. SILL HEIGHT 44" OFF FLOOR.

USE (3) #4 REBAR  $\frac{1}{2}$ " COVER IN LINTELS OVER DOOR & WINDOW OPENINGS IN BASEMENT

NOTE: ALL PIER FTGS. WITHIN 5' OF HOUSE MUST BEAR AT SAME ELEVATION AS HOUSE FTGS.

2X12 PT. LEDGER BD. BOLTED TO BAND BD. W/1/2" DIA LAG OR CARR. BOLTS, STAGGER EVERY 8"

4" CONCRETE SLAB  $\frac{1}{2}$ " #4 REBAR COVER 6 MIL VAPOR BARRIER OVER 4" GRAVEL BED

1' MAX BACKFILL #4 HORIZ REBAR @ 24" USE #4 VERTICAL REBAR @15" O.C. AS PER TABLES R404.1.2(3) & R404.1.2(9) FOR 1' TO 8' BACKFILL AREAS USE #4 VERT. @48" O.C. FOR BACKFILL UNDER 1'

9" TALL 8" POURED CONC. WALLS ON 16"x8" FTGS W/12"#4 REBAR

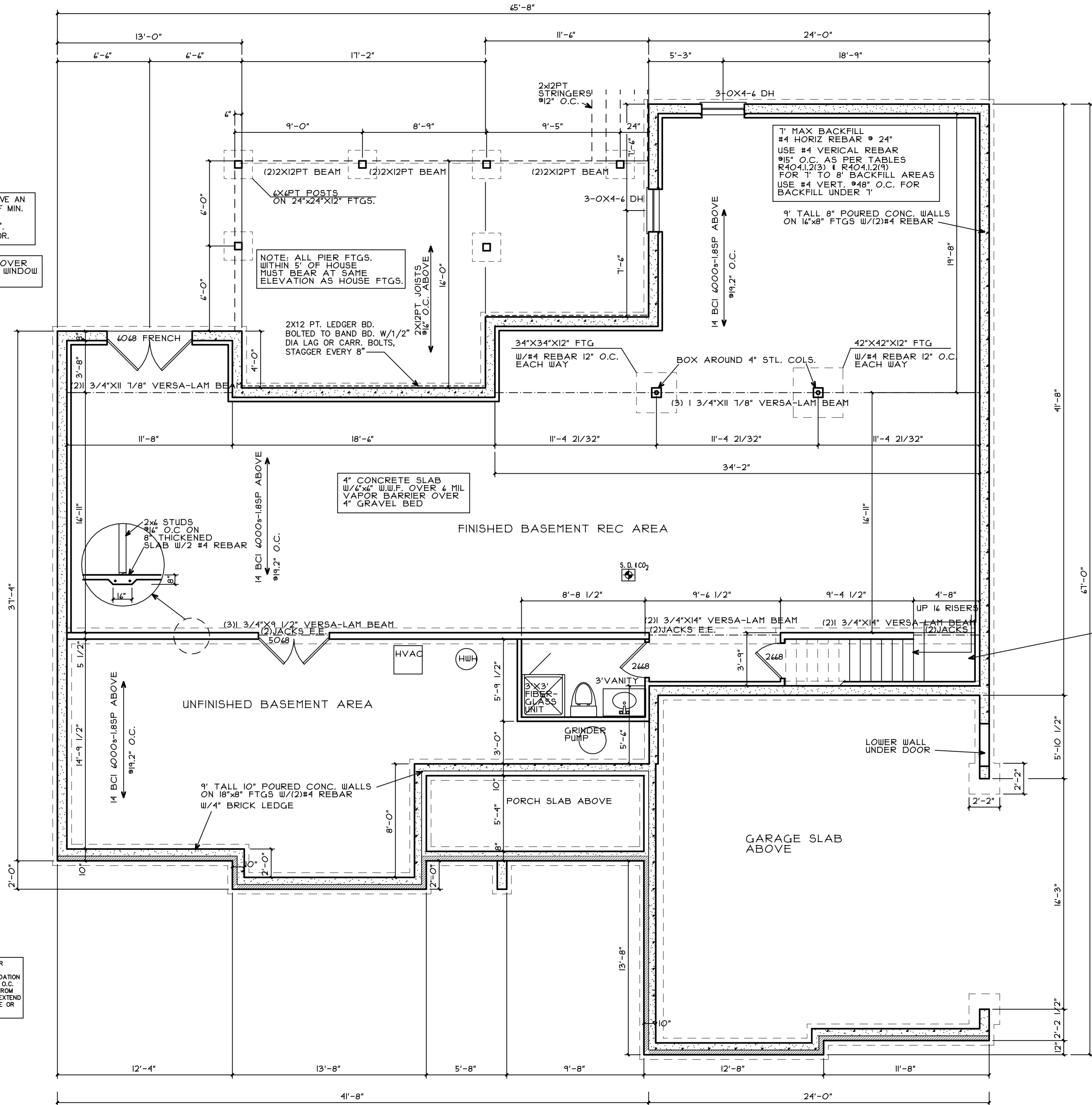
FINISHED BASEMENT REC AREA

UNFINISHED BASEMENT AREA

PORCH SLAB ABOVE

GARAGE SLAB ABOVE

NOTE: THE SILL PLATE OR FLOOR SYSTEM SHALL BE ANCHORED TO THE FOUNDATION W/ 1/2" DIA. BOLTS @6" O.C. & NOT MORE THAN 12" FROM CORNERS. BOLTS SHALL EXTEND A MIN. 7" INTO CONCRETE OR 15" INTO MASONRY



**BASEMENT/FOUNDATION PLAN** 2,412 SQ.FT.

SCALE 1/4"=1'-0"