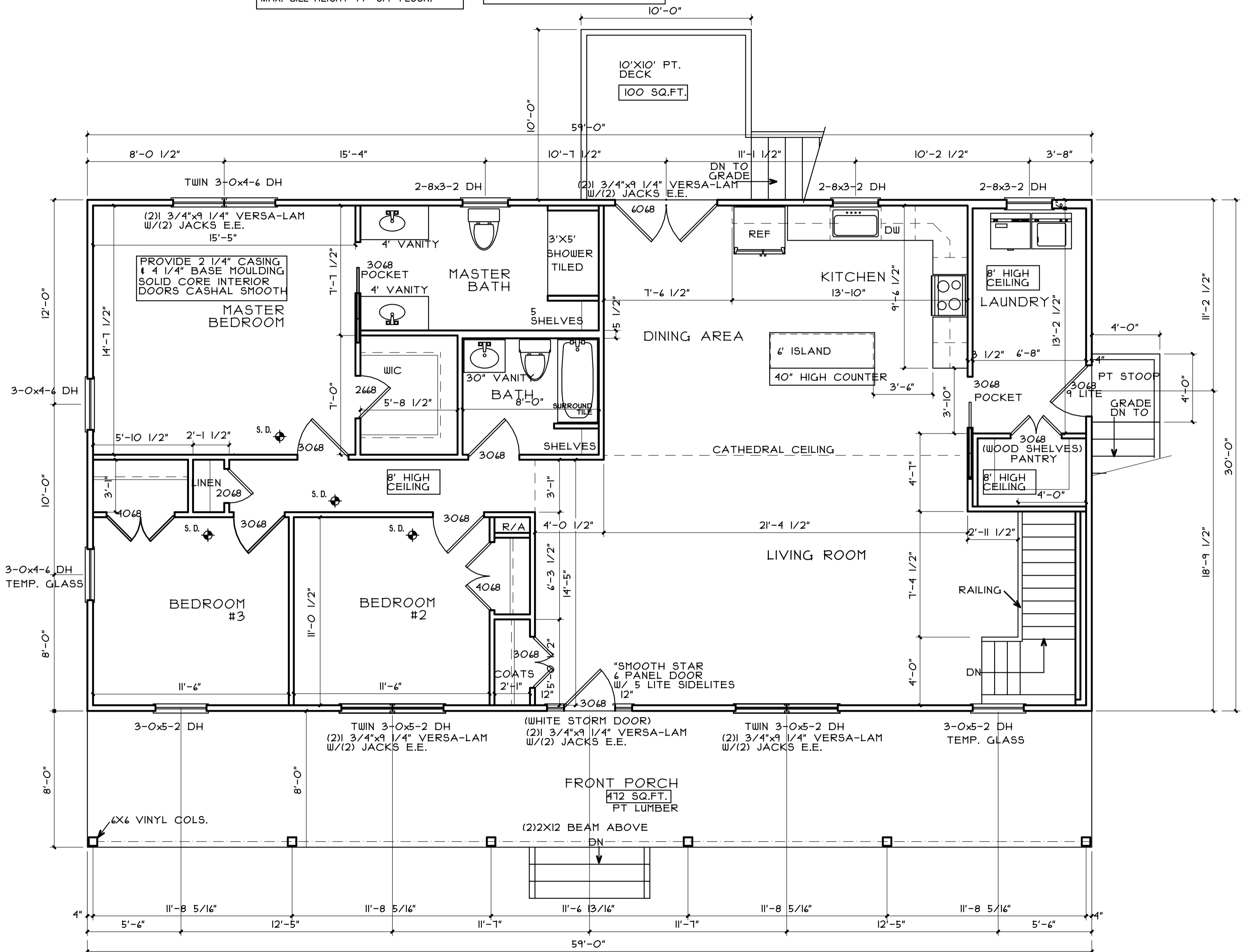


ALL HEADERS ARE
(2) 2X10'S U.N.O.
W/1 JACK EACH END

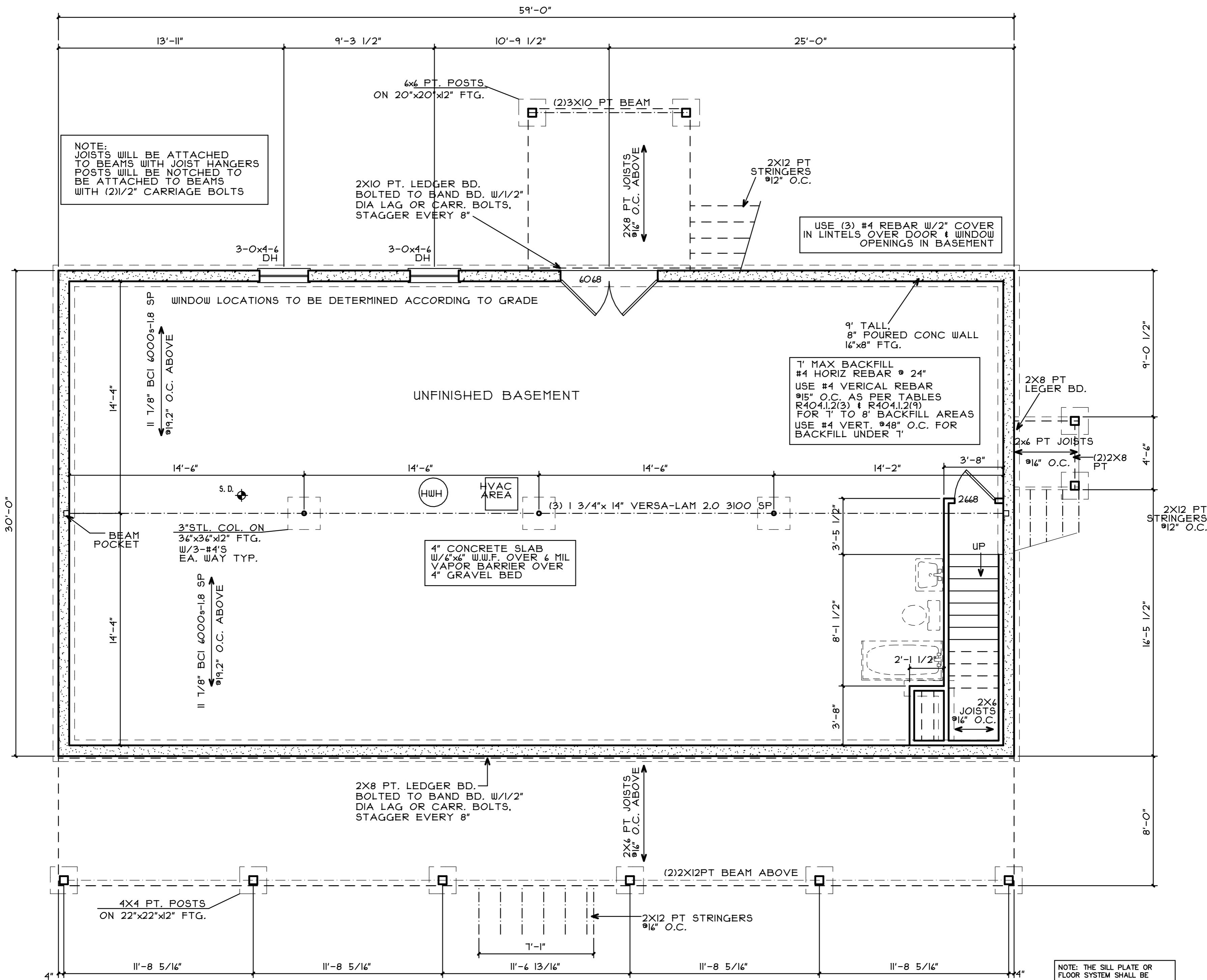
NOTE: ALL BEDROOMS MUST HAVE AN
EMERGENCY EGRESS OPENING OF MIN.
5.7 SQ.FT. NET CLEAR OPENING.
MIN. HEIGHT 24". MIN WIDTH 20".
MAX. SILL HEIGHT 44" OFF FLOOR.

FALL PROTECTION REQUIREMENT
R613.2 - IF THE LOWEST PART OF OPERABLE WINDOW
IS MORE THAN 72" ABOVE GRADE OR SURFACE AND THE
WINDOW SILL IS LESS THAN 18" ABOVE FINISHED FLOOR,
AN APPROVED GUARD MUST BE PROVIDED.



FIRST FLOOR PLAN 1,110 SQ.FT.

SCALE 1/4"=1'-0"



BASEMENT/FOUNDATION PLAN 1,110 SQ.FT.

SCALE 1/4"=1'-0"

NOTE: THE SILL PLATE OR FLOOR SYSTEM SHALL BE ANCHORED TO THE FOUNDATION W/ 1/2" DIA. BOLTS @ 6' O.C. & NOT MORE THAN 12" FROM CORNERS. BOLTS SHALL EXTEND A MIN. 7" INTO CONCRETE OR 15" INTO MASONRY